

# Smartgen®

## SG72 COMMUNICATION MODULES

### USER MANUAL



Smartgen Technology



众智电子 Chinese trademark

**Smartgen**<sup>®</sup> English trademark

**Smartgen** — make your generator *smart*

Smartgen Technology Co., Ltd.

No. 28 Jinsuo Road

Zhengzhou city

Henan Province

P. R. China

Tel: +86-371-67988888/67981888

+86-371-67991553/67992951

+86-371-67981000(overseas)

Fax: 0086-371-67992952

Web: <http://www.smartgen.com.cn>

<http://www.smartgen.cn>

Email: [sales@smartgen.cn](mailto:sales@smartgen.cn)

All rights reserved. No part of this publication may be reproduced in any material form (including photocopying or storing in any medium by electronic means or other) without the written permission of the copyright holder.




Smartgen Technology reserves the right to change the contents of this document without prior notice.

#### Version history

Date	Version	Contents
2008-06-18	1.0	Original release
2014-04-08	2.1	Upgrade the installation package of driver software

This manual is suitable for SG72 communication module only.

Clarification of notation used within this publication.

SIGN	INSTRUCTION
 NOTE	Highlights an essential element of a procedure to ensure correctness.
 CAUTION!	Indicates a procedure or practice, which, if not strictly observed, could result in damage or destruction of equipment.
 WARNING!	Indicates a procedure or practice, which could result in injury to personnel or loss of life if not followed correctly.

SmartGen

## CONTENTS

1	OVERVIEW .....	5
2	FUNCTION AND CASE DIMENSION .....	6
3	DRIVER INSTALLATION.....	7
4	TEST/VIEW COM PORT NUMBER .....	10

SmartGen

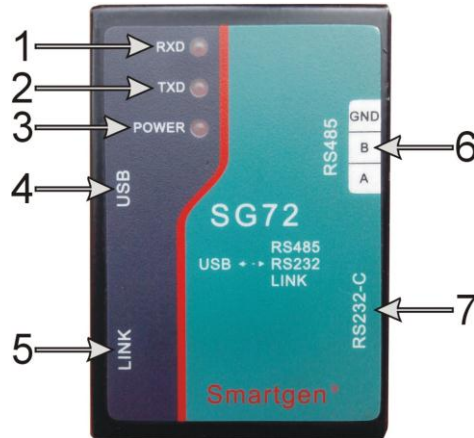
## 1 OVERVIEW

**SG72 module** is a communication port conversion module which allow the conversion of USB<->RS232, USB <-> RS485, USB<->LINK (Smartgen special). It is power supplied by USB port of PC.

SmartGen

## 2 FUNCTION AND CASE DIMENSION

- 1 USB<->RS232;
- 2 USB<->RS485;
- 3 USB<->LINK (Smartgen special port, TTL level port)
- 4 Case dimension: 72mm\*51mm\*27mm (length \*width\*height)



No.	Description
1	Receive data indicator. It is flashing when the data is received successfully.
2	Send data indicator. It is flashing when the data is sent successfully.
3	Power supply indicator. SG72 module is power supplied by USB port and there is no need to connect external power supply. It is illuminated when the connection of USB port is normal.
4	Standard USB port. Connect to USB port.
5	Smartgen special port. Communicate with controller which produced by Smartgen.
6	Standard RS485 serial communication port
7	Standard RS232 serial communication port (9 pin)

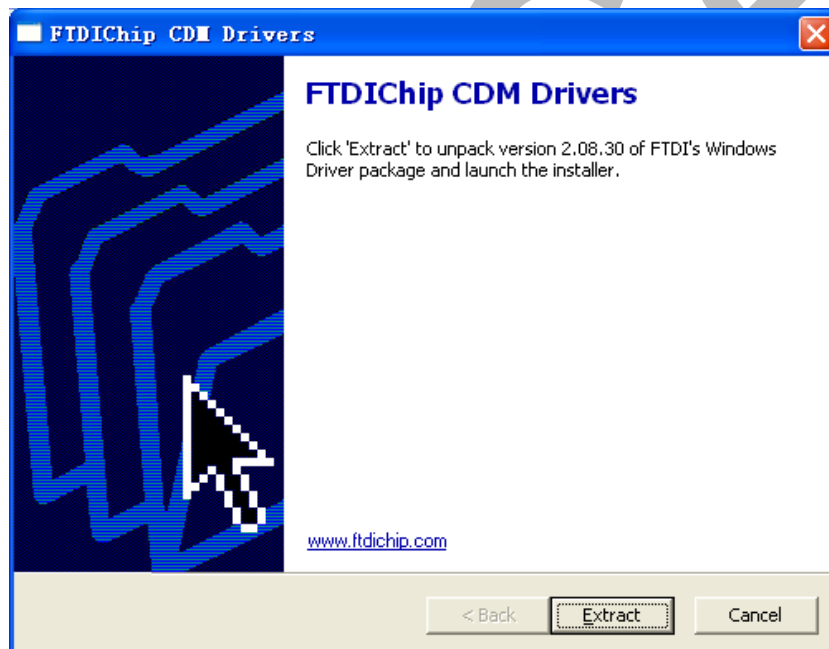
### 3 DRIVER INSTALLATION

1. Do not connect SG72 to USB port before installation.
2. Find out the driver file that is provided by Smartgen, the file name is “SG72 Driver Windows.exe”.



Note: The driver is incompatible with Windows 8.1.

3. Copy this file to arbitrarily folder in hard disk. Double click the file to open it and then click the “Extract” button. The screen should now display as follow:



4. Click the “Next” button and the screen should now display as follow:



5. The screen should now display as follow and you should waiting for the next step.





6. SG72 module driver installation was successful and “Finish” button should be clicked to confirm the installation. The screen should now display as follow:

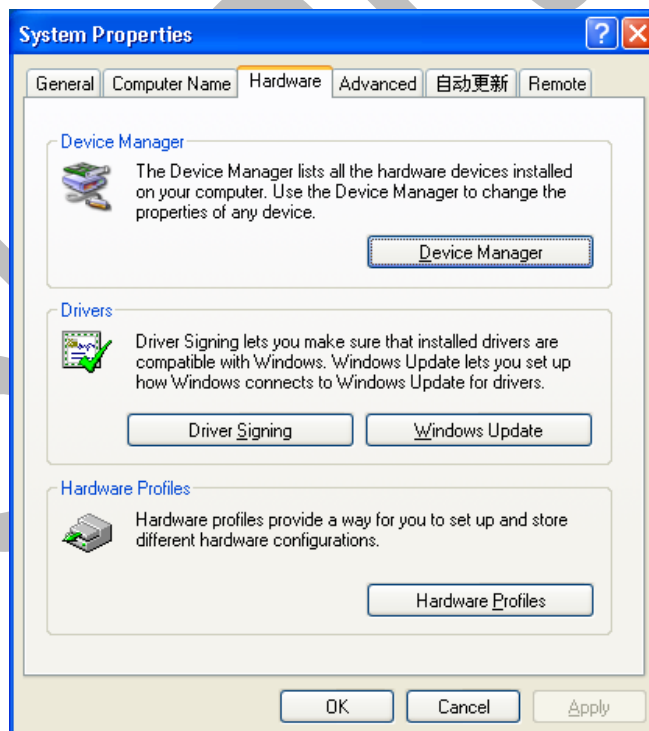


## 4 TEST/VIEW COM PORT NUMBER

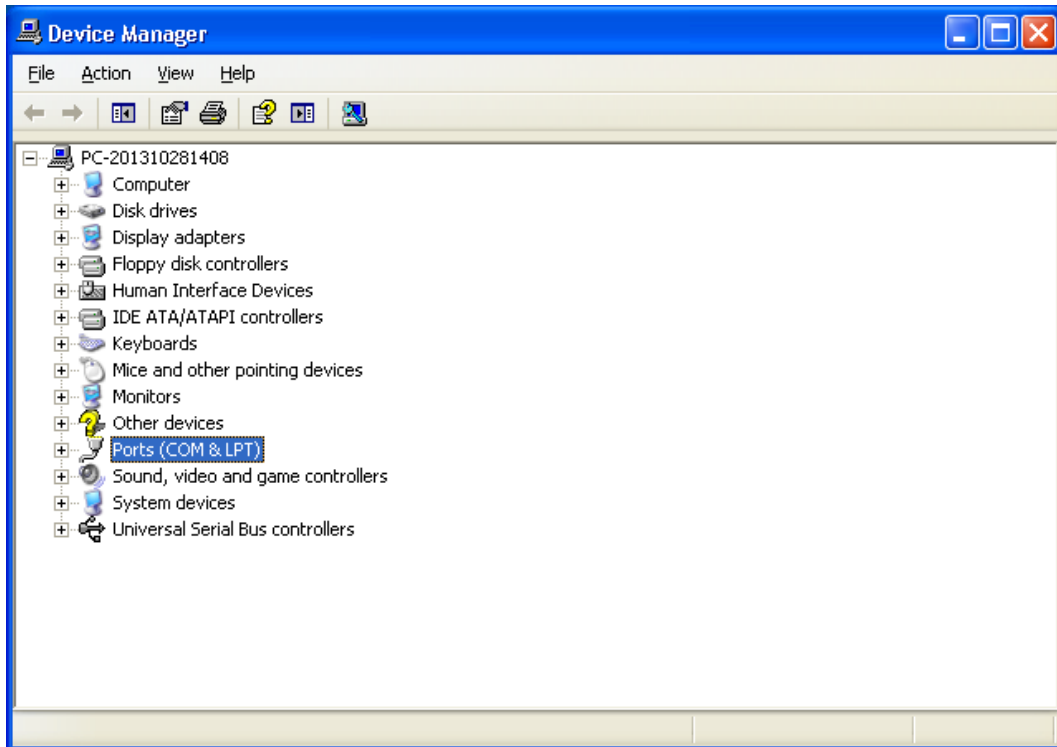
1. After installation, connect the SG72 module via USB port. On the desktop, right-click “My Computer” and then select “Properties”. The screen should now display as follow:



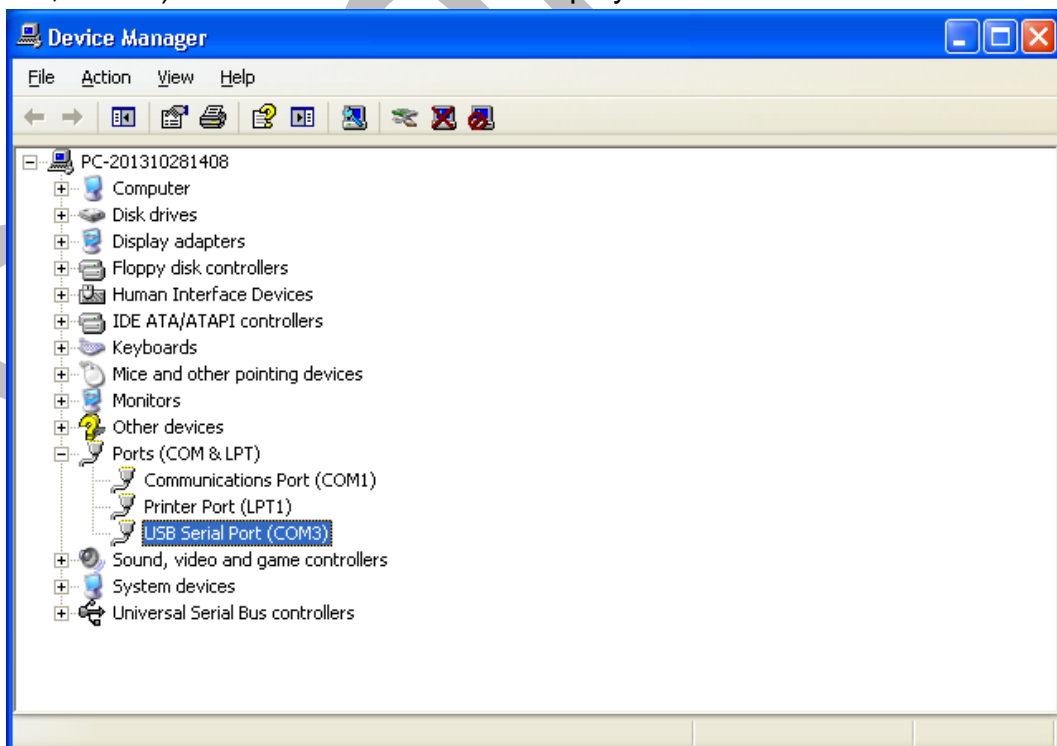
2. Select “hardware” item in “system property” dialog, and then click “device manger”. The screen should now display as follow:



3. Click the “+” symbol before the “Ports (COM & LPT)”, The screen should now display as follow:

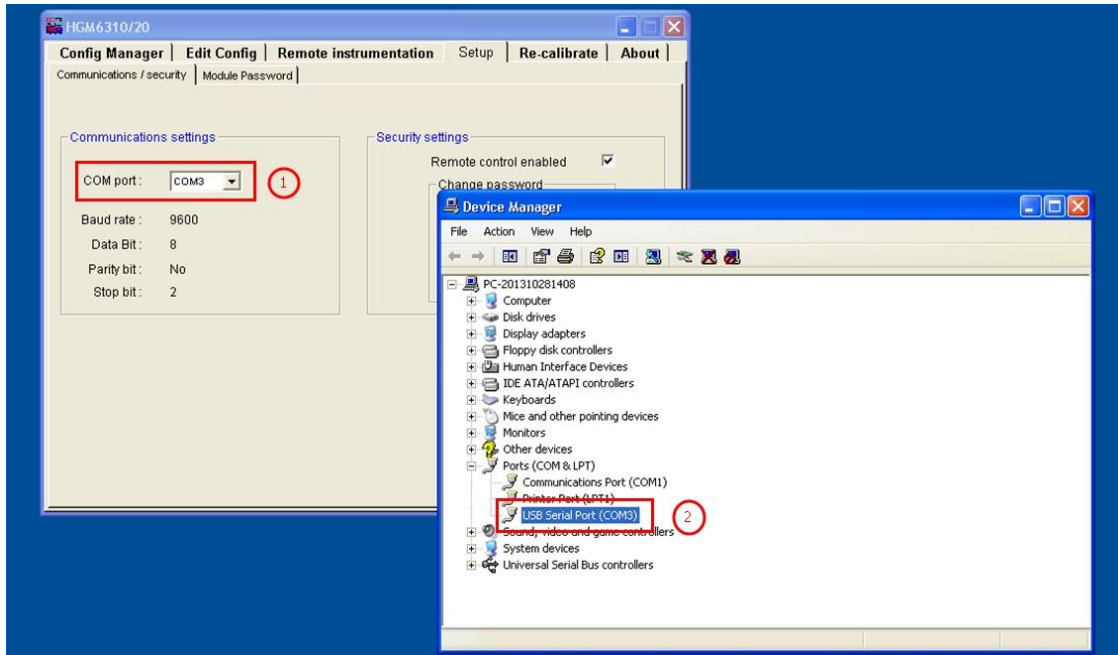


4. SG72 module is shown as “USB serial port (COM[x])” as it fits with USB communication port. Here is shown as COM3 (It will show different COM port according to different computer, e.g. COM4, COM5, COM6). The screen should now display as follow:



5. “USB serial port (COM3)” will disappear immediately if SG72 is disconnected with PC while appear again if SG72 is connected with PC. This operation can help identify the generated COM port after the SG72 is connected.

For example: Here we take HGM6300 test software as example. In “Communication/Security”, change the COM port as same as the generated COM port in device manager. The screen should now display as follow:



Make sure that the COM port of ① and ② are consistent.